

Olympic Industries

*Engineered Cedar
Fascia & Trim Boards*

*Engineered Whitewood
Fascia & Trim Boards*



Olympic Industries *Cedar Fascia & Trim Boards*

Complete your next residential or commercial design with Olympic's Cedar Fascia & Trim Boards, crafted from premium Western Red Cedar. They provide lasting performance that is both cost-effective and customizable, creating flexible options for any project. Apply as interior and exterior trim, window and door trim, garage doors, bellyband trim, corner boards, and much more—they give your design a polished look for a wide range of applications.



Lasting Performance, Rustic Versatility

- Kiln Dried Heat Treated (KDHT) to remove any excess moisture from the wood and ensure stability
- Finger-jointed and edge-glued to align the grain of the wood and improve strength
- Select tight-knot
- Double-primed with premium exterior-grade acrylic primer for additional protection and easy paint bonding



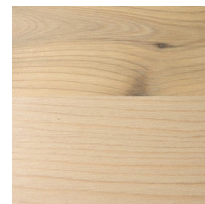
Available Sizes

| Thickness | Width | Length |
|-----------|--------------------------|--------|
| 1" | 2", 4", 6", 8", 10", 12" | 8-20' |
| 1 1/4" | 2", 4", 6", 8", 10", 12" | 8-20' |
| 2" | 2", 4", 6", 8", 10", 12" | 8-20' |
| 4" | 4" | 8-16' |

Available Finishes (Primed or Natural)



Rough



Planed



Machine Comb

*All measurements are based on the manufacturer's specifications at the time of production. Olympic Industries is not the manufacturer and disclaims any and all damages, liability, and losses arising from or related to the use of the product or reliance on the measurements set forth in this FAQ. Olympic provides no warranties express or implied with regard to the use or specifications of the product (and disclaims the implied warranties of fitness for a particular use and merchantability).



Contact us for more information



1.604.985.2115



info@olympicind.com



olympicind.com



Olympic Industries *Whitewood Fascia & Trim Boards*

Elevate your exterior with our Whitewood Fascia & Trim Boards, crafted from premium whitewood. Engineered for long-term performance and to protect the structural integrity of your project's design, whitewood resists warping and holds paint well. Sealing gaps around roofing and siding also help regulate indoor temperatures and improve energy efficiency. Our stunning Whitewood is available in three finishes to achieve a variety of looks for your next project.



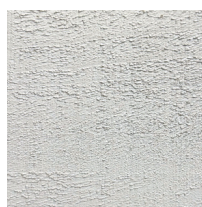
Exceptional Integrity, Classic Elegance

- Kiln Dried Heat Treated (KDHT) to remove any excess moisture from the wood and ensure stability
- Finger-jointed and edge-glued to align the grain of the wood and improve strength
- Almost clear—small pin knots allowed
- Double-primed with premium exterior-grade acrylic primer for additional protection and easy paint bonding

Available Sizes

| Thickness | Width | Length |
|-----------|--------------------------|---------|
| 1 | 2", 4", 6", 8", 10", 12" | 16/20' |
| 1 1/4" | 2", 4", 6", 8", 10", 12" | 16/20' |
| 2" | 2", 4", 6", 8", 10", 12" | 16/20' |
| 4" | 4" | 8', 12' |

Available Finishes



Resawn



Smooth



Non-Primed

*All measurements are based on the manufacturer's specifications at the time of production. Olympic Industries is not the manufacturer and disclaims any and all damages, liability, and losses arising from or related to the use of the product or reliance on the measurements set forth in this FAQ. Olympic provides no warranties express or implied with regard to the use or specifications of the product (and disclaims the implied warranties of fitness for a particular use and merchantability).



Contact us for more information



1.604.985.2115



info@olympicind.com



olympicind.com

